

International German Summer Championships

Diving

Open Class | Juniors

2026, June, 3rd-7th | Berlin



Schwimm- und Sprunghalle im
Europapark Berlin (SSE)
Paul-Heyse-Straße 26
10407 Berlin



Deutscher Schwimm-Verband e.V.

German Swimming Federation
Picture @JoKleindl

1 General Information

Diving Germany warmly welcomes you to the International German Summer Championships from June 3-7, 2026, in the capital city of Berlin. The event is open to all international federations that are members of World Aquatics, as well as to clubs affiliated with a corresponding federation.

HOSTS

German Swimming Federation & Berliner Turn- und Sportclub e.V.

LIVE

Live results and livestream will be available through sportlich.net ([Main](#)).

SPECTATORS & TICKETING

All diving fans are invited to attend the competition sessions on a complimentary basis and do NOT require tickets.

LOCAL ORGANIZING COMMITTEE

Competition Director	Christoph Bohm	bohm@dsv.de +49 162 24 21 373
Competition Manager	Matti Büchner	buechner@dsv.de
Technical Director	Heiko Alt	alt@dsv.de
Accommodation Manager	Katharina Fischer	fischer@dsv.de +49 173 60 77 679

DEADLINES AND DATES TO NOTE

Preliminary Entry & Accommodation Form	March, 4th: click here: Preliminary Entry & Accommodation Form (due February, 20th, 2026)
Final Accommodation Form	March, 26th: please use separate form attached
Payment Due	April, 24th
Final Sport Entries	May, 27th via alt@sportlicht.com
Arrival Date	May, 31 st
Training days	June, 1 st & June 2 nd
Dive Sheets Entries	until June, 2 nd 09:30h via www.sportlicht.net
Technical Meeting	June, 2 nd 09:30h (Location tbd)
Departure	June, 8 th

2 Diving – Rules & Format

Competition Regulations

The competition regulations (WB), the legal system and the anti-doping regulations of the German Swimming Federation (DSV) apply.

Eligibility

The event is open to all international federations that are members of World Aquatics, as well as to clubs affiliated with a corresponding federation.

Athletes born in 2014 and earlier are eligible to compete in the open class. Athletes born in 2006 and 2007 are eligible to compete in the junior class.

Competition Program

Only two divers from each nation are allowed into the semi-finals or finals. The number of German divers can be increased to the specified number of participants upon request from the German National Head Coach. These divers start out of competition!

1 Meter Springboard:

Preliminary
Final with 12 divers.

3 Meter Springboard and Platform:

Preliminary
Semi-Final with 18 divers
Final with 12 divers.

If there are fewer than 18 entries, the semi-finals will be held with 12 and the finals with eight divers.

Synchronised Events:

Preliminary
Final with 6 teams

Mixed-Synchronised events:

Final

Entries

The entries are to be made via the online portal (www.sportlicht.net) on the Internet. The Internet portal for registrations for this event closes automatically at the advertised registration deadline: Wednesday, May, 27th, 2026. Registrations to the portal for international teams shall be done via the following email address: alt@sportlicht.com.

The entry lists will be published on Thursday, May, 28th at 12:00 PM.

Dive Sheets

The complete diving list must be entered at the latest by Tuesday, June 2nd, 2026 (24 hours prior competition) (24 hours before the start of the event!) via the online portal (www.sportlicht.net).

In all events, the diver or the diver's representative may change the statement of dives before the commencement of the final, provided that the amended statement is lodged with the Referee, or their designated representative, no later than thirty (30) minutes after the end of the previous phase of the competition. If a new statement of dives is not submitted within the prescribed time, the diver shall perform the dives as indicated in the previous submission.

Awards

Medals for places 1-3, certificates for the final places.

3 Schedule

Wednesday, June 3rd			
09:30h	Synchronised 10m	Women	Preliminaries
	Synchronised 10m	Men	Preliminaries
	Springboard 1m	Women & Juniors	Preliminaries
	Springboard 1m	Men & Juniors	Preliminaries
	Synchronised 10m	Women	Final
	Synchronised 10m	Men	Final
	Springboard 1m	Women	Final
	Springboard 1m	Men	Final
Thursday, June 4th			
10:00h	Synchronised 3m	Men	Preliminaries
	Synchronised 3m	Women	Preliminaries
	Synchronised 3m	Men	Final
	Synchronised 3m	Women	Final
Friday, June 5th			
10:00h	Springboard 3m	Men & Juniors	Preliminaries
	Platform	Women & Juniors	Preliminaries
	Mixed-Synchronised 3m		Final
	Mixed-Synchronised 10m		Final
Saturday, June 6th			
09:30h	Platform	Women	Semifinals
	Springboard 3m	Men	Semifinals
	Platform	Men & Juniors	Preliminaries

	Springboard 3m	Women & Juniors	Preliminaries
	Combination	Juniors	Award ceremony
	Platform	Women	Final
	Springboard 3m	Men	Final
Sunday, June 7th			
09:30h	Springboard 3m	Women	Semifinals
	Platform	Men	Semifinals
	Springboard 3m	Women	Final
	Platform	Men	Final
	Combination	Women	Award ceremony
	Combination	Men	Award ceremony

At platform events, diving from heights of 5m and 7.5m is valid.

Presentation of Finalists

It will be held just before the start of the event.

Opening Ceremony

The time will be announced at the technical meeting. Two divers per club/nation.

Time Schedule

The schedule will be specified after the registration has been opened based on the entries and will be published with the entry lists. The entry lists will be published on Thursday, May, 28th at 12:00 PM.

Practice Times

Practice times and breaks between the competitions will be announced with the entry lists. Training will be available starting Monday morning, June 1, 2026, and will also be available between events on competition days.

Accreditation

There will be no accreditations, but checks will be carried out to ensure that no unauthorized persons enter the field of play and pool/dryland/gym.

4 Arrival & Transportation

All arrivals and departures can be organised to and from **Berlin Brandenburg Airport (BER)** from which the venue and the event hotels can be reached as follows:




45 minutes (30km)



45 minutes

Due to the airport's excellent **public transport connections** to Berlin city center, no transport system via minibuses or cars through the LOC is offered. Please use public transport to get from the airport to the hotel (and vice versa).

 Google Maps will show you the best option for your arrival/departure time (the stop at the hotel/pool is called "Landsberger Allee"). There are ticket machines at the airport and at the "Landsberger Allee" stop.

If you arrive at **Berlin Central Station** via train, the recommendation is the same.

Please note that the costs of the **underground parking garage** at the hotel are not covered by the LOC, but must be paid at cost price at the hotel reception (€25.00 per day/per car). However, there is also free parking available in the side streets near the pool/hotel.



Due to **walking distance** between the hotels and the competition and training venue (distance 550 m / 8 min), no daily transport service for delegations will be provided.

VISA

Citizens of certain countries and territories need a visa to visit Germany. On the Federal Foreign Office webpage you can find out whether you need a visa for visits to Germany and the Schengen states of up to 90 days. Upon request sent to fischer@dsv.de, the LOC will provide visa assistance by issuing an invitation letter.

5 Accommodation & Meals

OFFICIAL HOTEL

Vienna House Andel`s

The Vienna House by Wyndham Andel`s Berlin is a 4-star contemporary hotel located in the bustling heart of Berlin and within a five-minute walk of the competition venue. The hotel offers modern design, spacious rooms and top-notch amenities. Enjoy stunning views of the city from the Skykitchen restaurant and bar, relax and unwind at the SpaSphere or take advantage of the hotel`s central location to explore all that Berlin has to offer.

Address

Landsberger Allee 106
10369 Berlin

Distance

550m

Shuttle Time

8 min walking



Pictures from: <https://www.wyndhamhotels.com/de-de/vienna-house/berlin-germany/vienna-house-andels-berlin/overview>
[Website](#) for more information

Full board hospitality at Vienna House Andel`s

Breakfast: Mon-Fri 06:30-10:30 & Sat-Sun 06:30-11:00

Lunch: depending on competition programme

Dinner: depending on competition programme

Full board starts with dinner on May 31st and ends with breakfast on June 8th.

Check-In/-Out

Check-In: 15.00h

Check-Out: 12.00h

Package Price

Single room	225,00 € per night per person
Double room	200,00 € per night per person

The prices include

- participation in the competition,
- entry fees,
- access to the swimming pool, dryland and gym,
- hotel accommodation,
- full board (three meals),
- hotel amenities: Highspeed Wi-Fi at the hotel, access to hotel gym 24/7, access to SpaSphere (Wellness & massage at the hotel).

Further costs (parking, minibars, lock pay-TV channels etc.) must be paid for directly at the hotel. The LOC does not bear any additional costs.

Bookings must be made via the Accommodation Manager (fischer@dsv.de) using the appropriate forms (Preliminary & Final Accommodation Forms). Bookings outside of the package prices are not possible, as the package prices also include the costs for the event.

Please note: We have a maximum of 30 accommodation units available at Vienna House Andel's. These will be allocated on a first-come, first-served basis. The date of receipt of the Final Accommodation Form by Accommodation Management will be decisive.

If all places are full, we will be happy to help find hotels within walking distance of the pool. In this case, meals (lunch & dinner) will probably also be available at Andel's.

6 Competition Venue

Pool



Schwimm- und Sprunghalle im Europasportpark (SSE) – Berliner Bäder
Paul-Heyse-Straße 26
10407 Berlin

Distance to hotel

550 metres (8 minutes walking)

Opening hours

7:00-20:00 (depending on competition programme)

Facilities

- | | |
|---|--|
| <input type="checkbox"/> Changing rooms | <input type="checkbox"/> Medical Centre |
| <input type="checkbox"/> Showers | <input type="checkbox"/> Water dispenser |
| <input type="checkbox"/> Dryland Area | <input type="checkbox"/> Team Seating |
| <input type="checkbox"/> Ice baths and hot tub* | <input type="checkbox"/> Gym |
| <input type="checkbox"/> First Aid Stations | <input type="checkbox"/> Coaches' zones |

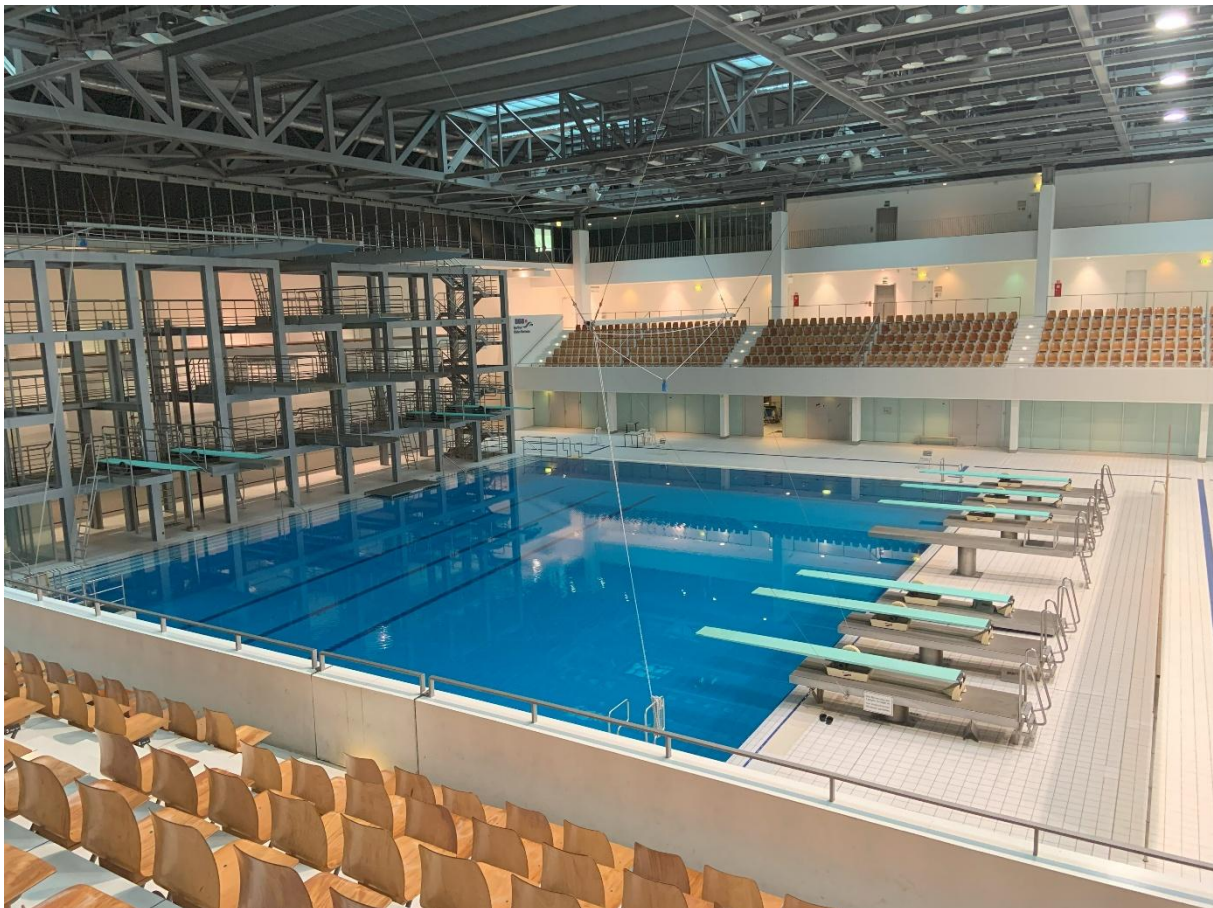
Specifications

Pool 25 x 21 x 5m Indoor pool with min. 26°C water temperature	Dryland Area 413 m ²
---	------------------------------------

Spectator Seating

1.300	none
-------	------

* Two little ice baths and one hot tub are located next to the pool. These are permanently accessible during training and competition days



Platforms:

- 2x10m
- 1x7,5m
- 2x5m
- 3m
- 1m
- 0,2m
- Hydraulic platform

Springboards:

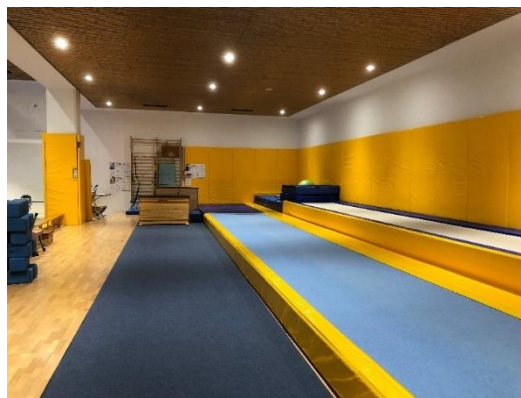
- 4x3m
 - 6x1m
 - Hydraulic platform
-
- Duraflex Maxi B
 - Treadmaster

Please note the dimensions of the platforms are as follows:

- Diving platforms have a width of 170cm each
- Distance between both platforms (5 & 10m) is 300cm

Therefore the 10m synchronised events divers have to dive from 2 separate platforms.

Dryland



Fully equipped dryland:

- 3x Trampolines
- 3x Springboards
- 2x Platforms (with Treadmaster covering)
- 6x Salto boxes
- Landings mats
- AirTrack
- Gym-floor

Gym

Fully equipped gym

- typical stationary strength-training devices
- mobile equipment like barbells, dumbbells, medicine balls, and Thera-Bands
- open space for core training.



7 Judges

Each club that submits more than four entries must enter the name of at least one judge via the Internet portal and bear the costs for this judge. The judge must be in possession of a valid judge's license and be available on all competition days. We would appreciate it if the registered judge were at World Aquatics Bronze level at least.

Each participating nation must appoint at least one judge in the technical meeting. If you are unable to appoint a judge, a fee of €300 will be due at the technical meeting.

8 Medical Services

On-site medical services will be available. In case of an emergency, the EMS will decide which hospital the patient will be transferred to depending on the type of injury or illness. In case of needing hospital assistance, all participants must have medical insurance provided by their National Federation. The LOC will coordinate with the Team Delegate the transfer to the hospital.